

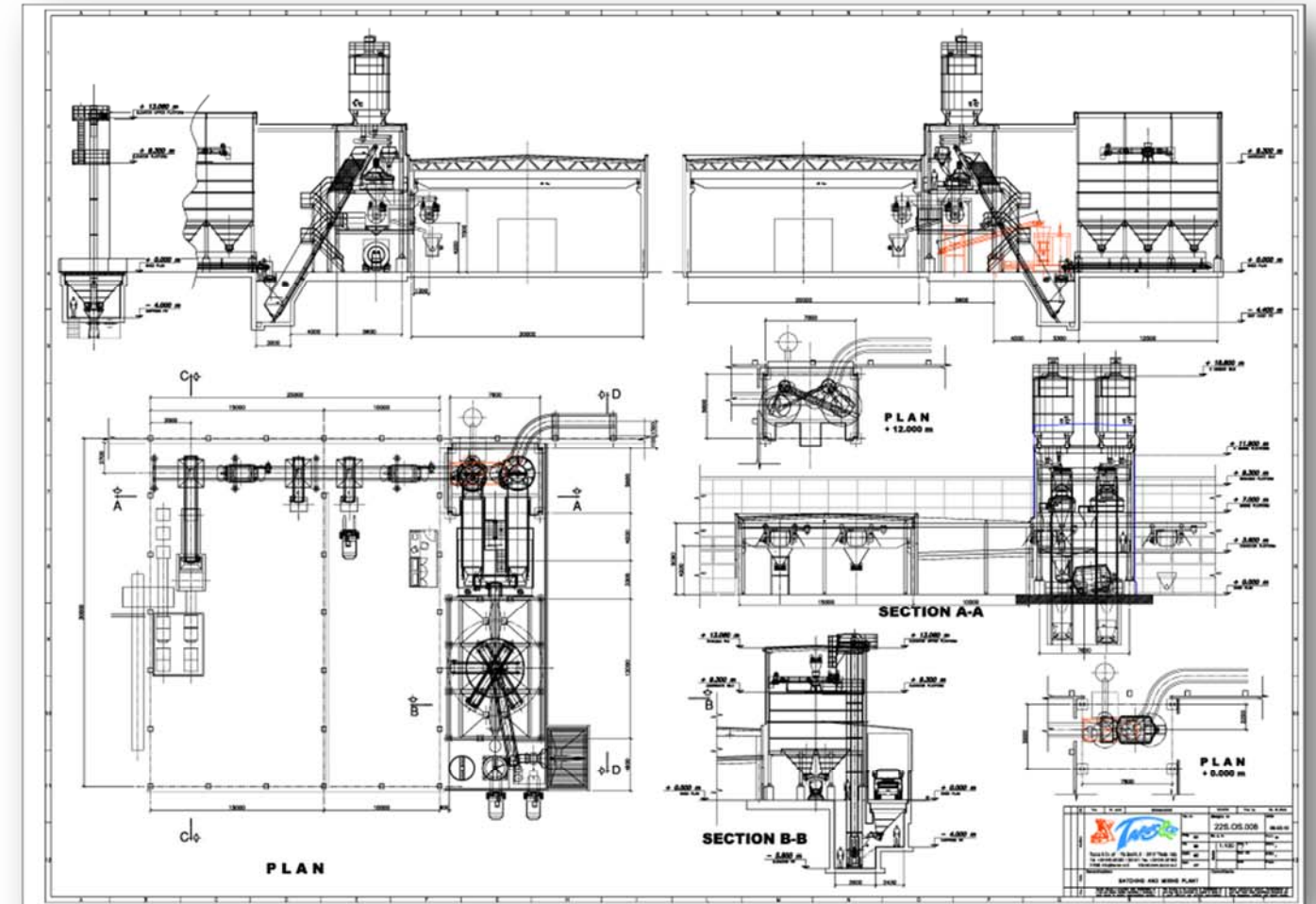
2010

NORWAY

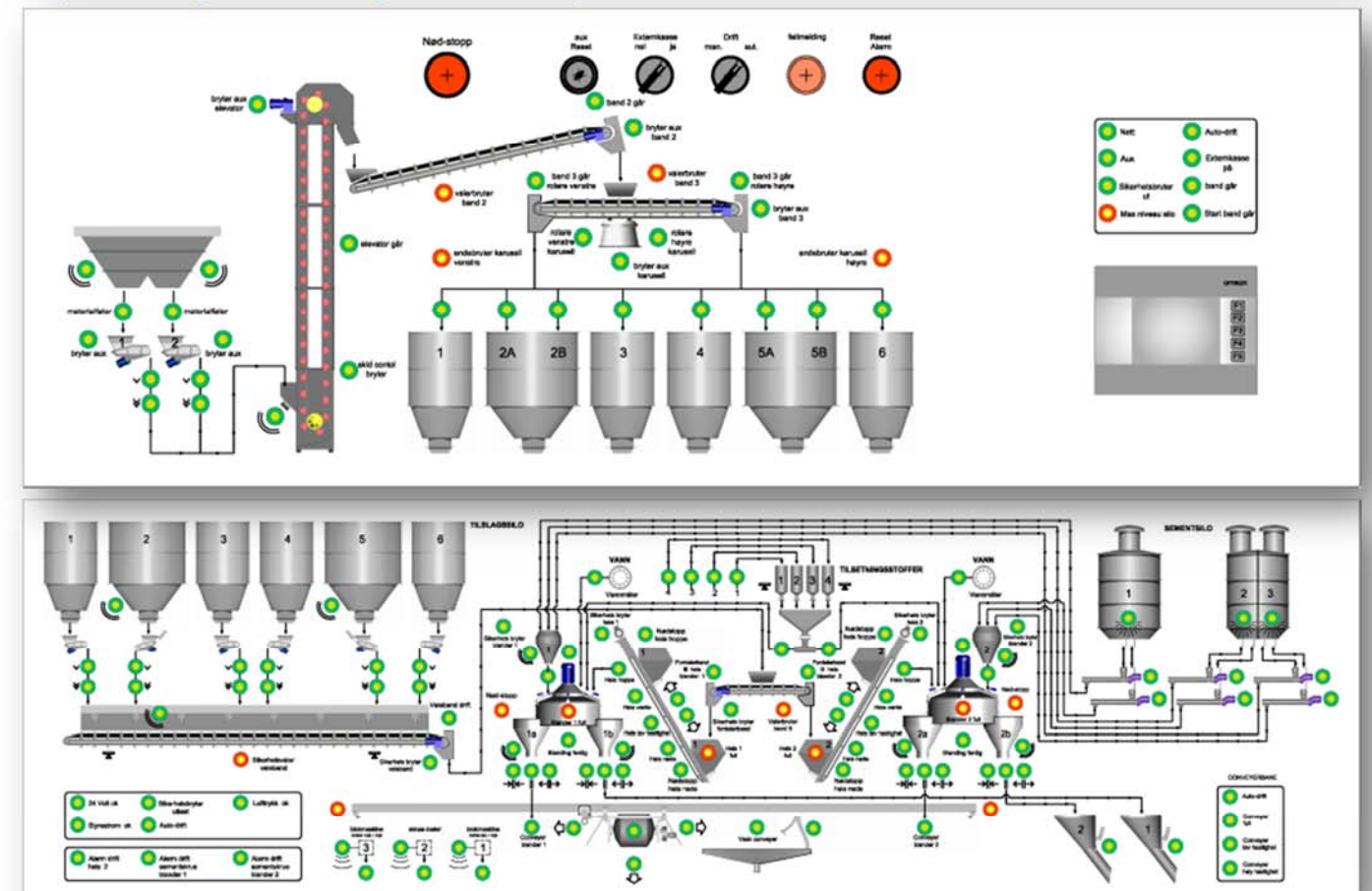
Concrete batching and distribution plant for the production of precast concrete .

#### Main technical features:

- Concrete production : 45 cbm/h  
(for a batch each 3 min)
- Countercurrent mixers: 1x2250/1500 lt  
1x1125/750 lt
- Aggregate silos : 2x80 cbm  
4x40 cbm
- Cement silos : 1x50 cbm  
2x25 cbm
- Additives: 4x1600 lt
- Bucket conveyors : 1 x 1,5 cbm
- Max speed : 160 mt/min
- Rails length : 45 mt
- Concrete discharge Stations : 4
- Automatic washing system : 110 bar
- Concrete recycling : 12 cbm/h
- Water clarification System : 500 lt/h
- Microwave moisture metering of concrete : 2 pcs
- Microwave moisture Metering for sand : 4 pcs
- Insulation panels :
  - Wall panels 120 mm : K=0,200
  - Roof panels 120+35 mm : K=0,169
- Production control system:
  - 1 Software program for aggregate loading : T2008-I
  - 1 Software program for dosing and mixing : T2008-M
  - 1 Electrical switchboard for the man. and automatic control mode of aggregate filling and storage. All functions carried by PLC and Touch-screen.
  - 1 Electrical switchboard for the man. and automatic control mode of dosing and mixing system. All functions carried by PLC and Touch-screen.
  - 1 External control box for selection of Aggregate destination.
  - 2 External control box for the control of mixers



Lay-out drawing of new batching and distribution plant



Flow-sheet drawing of the dosing and distribution plant